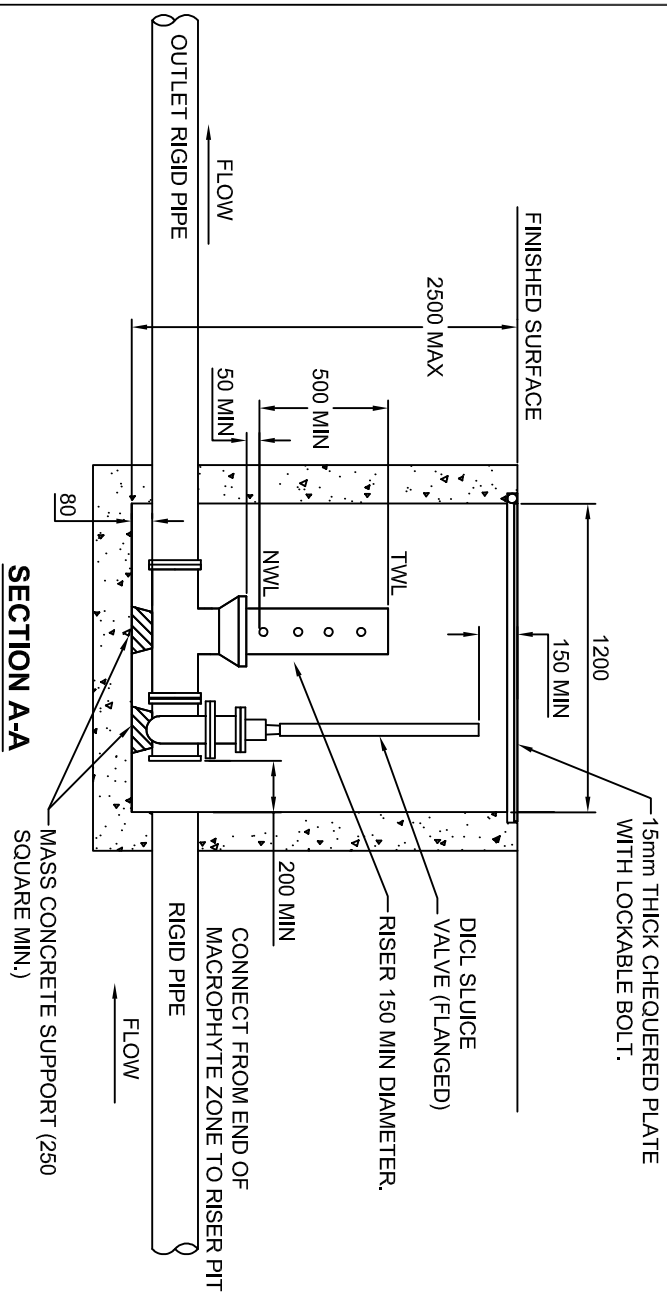


**PLAN**




**SECTION A-A**

- NOTES**
1. REFER TO WATER CYCLE MANAGEMENT GUIDELINES AND SOLID GUIDELINES FOR DESIGN GUIDANCE.
  2. ENGINEERING WORKS TO BE DESIGNED IN ACCORDANCE WITH COUNCIL'S ENGINEERING GUIDELINES.

DRAWING DETAIL BASED ON THE INSTITUTE OF PUBLIC WORKS ENGINEERING AUSTRALIA QUEENSLAND DIVISION INC. STANDARD DRAWINGS

|         |            |              |
|---------|------------|--------------|
| VERSION | DATE       | COMMENTS     |
| 01      | 22 JUNE 12 | DRAFT ISSUE  |
| 02      | 11 DEC 13  | REVISE NOTES |

WORK TO FIGURED DIMENSIONS - DO NOT SCALE - THIS DRAWING IS SUBJECT TO COPYRIGHT AND IS THE PROPERTY OF LAKE MACQUARIE CITY COUNCIL. PERSONS MUST NOT RELY ON THESE STANDARD DRAWINGS AS THE EQUIVALENT OF OR A SUBSTITUTE FOR PROJECT-SPECIFIC DESIGN & ASSESSMENT BY A QUALIFIED PROFESSIONAL.



|  |   |
|--|---|
| 126-138 MAIN ROAD<br>SPEERS POINT<br>PHONE (02)4921 0333<br>www.lakemac.com.au | DRAWING TITLE<br><b>WETLAND LOW FLOW<br/>RISER OUTLET</b> |
| SHEET: 1 OF 1  | DRAWING No: EGSD-420                                      |
|  | VERSION: 02   |