

Rathmines Park

Master Plan

September 2020



Images by author or sourced from *Lake Macquarie Tourism / Lake Macquarie City Council*

DRAWING SCHEDULE

- | | |
|--|-------------------------------------|
| 00 Title Sheet | 08 Master Plan - Full Site |
| 01 Existing Site | 09 Master Plan - Precinct A |
| 02 Precinct Plan | 10 Master Plan - Precinct B & C |
| 03 Analysis - Environment & Heritage | 11 Master Plan - Precinct D, E, & F |
| 04 Analysis - Circulation & Wayfinding | 12 Master Plan - Detail Plan 1 |
| 05 Analysis - Precinct A | 13 Master Plan - Detail Plan 2 |
| 06 Analysis - Precinct B & C | 14 Master Plan - Detail Plan 3 |
| 07 Analysis - Precinct D, E, & F | 15 Master Plan - Detail Plan 4 |



LEGEND

- Extent of State Heritage Curtilage
- Plan of Management Area
- Public Toilet
- Picnic / Park facilities
- Existing trees and vegetation

NOTES

- 1 Styles Point boat ramp
- 2 Former landing strip
- 3 Native vegetation with various RAAF era heritage elements
- 4 Former Wireless Transmission Station area
- 5 Former Sleeping and Residential Quarters
- 6 Former Bomb Dump
- 7 'F Jetty' / former Marine Section Timber Wharf
- 8 Former Guard House and base entry
- 9 Concrete Hardstand Apron
- 10 Catalina Boat Ramp
- 11 Bitumen Hardstand
- 12 Christadelphian Bible School / Former Main Hangar Complex
- 13 General Stores concrete pad
- 14 Swimming Area/Baths
- 15 Club Catalina - Bowling club and greens / Former Officer's Mess
- 16 Former Bomb and Fuel Wharf
- 17 Catalina War Memorial
- 18 Aircraft Stores concrete pad
- 19 Playground
- 20 Motor Transport Building concrete pad
- 21 Rathmines Scouts / Former Inflammable Liquids Store
- 22 Catalina Lakefront Retreat / Former Hospital
- 23 Parade Ground
- 24 Rathmines Theatre and Heritage Centre / Former Picture Theatre and Gym
- 25 Lake Macquarie Classic Boat Assoc. / Former Airmen's Ablution Building and Boiler House
- 26 Fishburn Fields and sports club rooms
- 27 Tennis courts and club room
- 28 Skate Park
- 29 Lake Macquarie Classic Boat Assoc. / Former Emergency Power House
- 30 Westlakes Music Centre / Former Sergeant's Mess

Rathmines Park
Plan of Management



May 2020
Scale 1:5000@A3



ayling drury landscape architecture

Existing Site



LEGEND

- Extent of State Heritage Curtilage
- Plan of Management Area

PRECINCTS

- A STYLES POINT PRECINCT
- B BUSHLAND / NATIVE VEGETATION PRECINCT
- C SPORTS AND YOUTH FACILITIES PRECINCT
- D CATALINA RAMP FORESHORE PRECINCT
- E CATALINA BAY / MEMORIAL POINT PRECINCT
- F TOWN PARK PRECINCT

**Rathmines Park
Plan of Management**



May 2020
Scale 1:5000@A3



ayling drury landscape architecture

Precinct Plan



LEGEND

- Extent of State Heritage Curtilage & local heritage item 244
- Plan of Management Area
- SV Significant vegetation
- Flood impact
- Open Drain
- Underground drain
- Endangered Ecological Community (EEC) vegetation areas

LOCAL HERITAGE ITEMS

- A Westlakes Music Centre (Former Sergeant's Mess): Rathmines Holiday Camp - Item 133
- B Rathmines Theatre and Heritage Centre (Former Picture Theatre and Gymnasium): Community Hall - Item 125
- C Lake Macquarie Classic Boat Assoc. (Former Airmen's Ablution Building): Catamaran Club - Item 126
- D Catalina War Memorial - Item 128
- E Club Catalina (Former Officer's Mess): Rathmines Bowling Club - Item 131
- F Christadelphian School (Former Main Hangar Complex) - Item 132
- G Catalina Lakefront Retreat (Former Hospital): Catalina Memorial Nursing Home - Item 124
- H Styles Point Boat Ramp: Boat Slip - Item 130
- I Lake Macquarie Classic Boat Assoc. (Former Emergency Power House): Brick Store - Item 129
- J Flying Boat Ramps - Item 127

Rathmines Park
Plan of Management



LEGEND

- Plan of Management Area
- Major vehicle access
- Minor vehicle access
- Shared user path
- Local pathway
- Bush tracks / Trails
- Pedestrian desire line
- P Formal / recognised parking
- OP Overflow / informal parking
- J Jetty / Wharf
- B Boat ramp
- K Passive water craft
- W Wayfinding intersections

Rathmines Park
Plan of Management



May 2020
Scale 1:5000@A3



ayling drury landscape architecture



LEGEND

Precinct A - Styles Point

- ① Existing vehicle and pedestrian access. Opportunity to extend shared path to west / Kilaben Bay subject to feasibility.
- ② Opportunity to better recognise and interpret former landing strip, now providing vehicle access to Styles Point.
- ③ Existing disc golf course with moderate use. Provides alternative recreation activity to extensive open space area. Potential to reduce by one hole (reduce from 10 to 9 holes) in vicinity of boat ramp area to avoid conflict with picnic use.
- ④ Popular shared user path through park linking to Rathmines town centre.
- ⑤ Extensive gravel access roads (x3) creates detrimental character impact on otherwise natural headland with high quality outlooks. Opportunity to rationalise whilst remaining practical for regular yacht club use.
- ⑥ Existing amenities in poor condition. Opportunity for renewal to include modest yacht club storage, showers and accessible toilet facilities.
- ⑦ Boat ramp access popular for yacht and powered water craft. Gravel approach and rigging area results in gravel wash onto ramp and waters edge.
- ⑧ Foreshore area used for yacht mooring, foreshore access and gathering space. Potential for greater picnic style infrastructure subject to removal of disc golf hole in this locality.
- ⑨ Headland picnic use with restricted vehicle access. Popular beach access point for water-ski and related activities.
- ⑩ Entry to established bushland area with heritage elements and opportunities for interpretation. Opportunity to provide signs and a more dedicated bushwalk link. Refer Precinct B.

Rathmines Park Plan of Management



May 2020
Scale 1:3000@A3



ayling drury landscape architecture

Analysis - Precinct A



LEGEND

Precinct B - Bushland / Native Vegetation

- 1 Established bushland area with heritage elements and opportunities for interpretation. Several walking tracks apparent. Opportunity for interpretative trail linking to shared user path to create a dedicated loop bushwalk link through to town centre.
- 2 Former Guard House / entry to Rathmines Park. Opportunity to reinterpret area and create a gateway to former RAAF base area.
- 3 Former Bomb Dump area with extensive trail network including improved mountain bike trails. Operational land with Tourism zoning (outside Plan of Management), though highly vegetated and potentially subject to contamination given former use activities.
- 4 Area of Council owned bushland (Community land) outside of heritage curtilage and subject to Council's Generic Plan of Management.
- 5 Potential to create canopy linkage between bushland areas to assist in wildlife movement between Rathmines Park and areas of native vegetation to the west.

Precinct C - Sports & Youth Facilities

- 6 Tennis area with moderate use and some aging facilities, albeit generally meeting current needs of community-based sporting / social activity.
- 7 Informal parking areas around sports fields. Well utilised with resulting wear and tear reflecting high use periods and popularity of soccer club.
- 8 Existing sports fields in reasonable condition. Lighting, drainage, irrigation and grandstand seating required.
- 9 Existing sporting amenities / club facilities. Inadequate toilets, player / umpire amenities and storage facilities for size of club. Substantial changes required to meet district standards.
- 10 Existing well-utilised but basic skate park. Adjoining land to north used for informal parking with access from Stilling St.
- 11 Dorrington Road providing main access from west. Issues with vehicle speed and lack of entry / former RAAF base recognition.
- 12 Existing uncontrolled overflow parking area - busy on sports days, particularly in winter. Also used to access former Emergency Power House now utilised by the Classic Boat Assoc.

Rathmines Park
Plan of Management



May 2020
Scale 1:3000@A3



ayling drury landscape architecture

Analysis - Precinct B & C



LEGEND

Precinct D - Catalina Ramp / Foreshore

- 1 Existing open picnic area with basic shelters, toilets, parking and associated pathways. Adjoining "F" jetty recently upgraded and providing time restricted water access (boats) to Rathmines Park.
- 2 Hardstand area with open nature associated with heritage significance of Catalina flying boat manoeuvring. Current use is associated with "hoon" activity, but also learner driving and other community activities and events. Area adjoining Christadelphian School used for car parking during holiday period activities. Opportunity to create additional use of extensive space through increased boating activities (e.g. ramp improvements), events or new structure (e.g. museum / hangar).
- 3 Potential hangar / museum facility in location of previous hangars. Views of Lakefront Retreat impacted and alternative location to be investigated should the facility proceed.
- 4 Privately owned Catalina Lakefront Retreat (former hospital site). Operated by a registered charity & promoted as "conference centre for all, with special facilities for people with disabilities". Opportunity to better improve accessibility across the site.
- 5 Parade ground area with current designation as dog off-leash area and use for over-flow / event parking.
- 6 Privately owned Christadelphian Bible School site with repurposed original site buildings, many in good condition internally. Community concern regarding degradation of asbestos roofing.
- 7 Safety concern relating to crossing of Stilling Street and need for wayfinding in locality due to open nature of area.

Precinct E - Catalina Bay / Memorial Point

- 8 Swimming area poorly utilised in current condition. Improved access and quality would assist use. Highlighted by many as being previously popular.
- 9 Former bomb and fuel wharf with potential to be reconstructed to provide water access or dedicated access friendly fishing platform. Note potential for contamination due to previous use.
- 10 Bowling Club facilities on long-term lease from Council. Building in variable condition with some unsympathetic external elements around original heritage building (Officer's Mess). Opportunity to provide one-way road and better link to surrounds.
- 11 War memorial area with a variety of additions and inconsistent materiality, compromising heritage values. Refer to CMP for details.
- 12 Catalina Point provides an attractive walking experience, though no formal tracks exist. Opportunity for environmental restoration projects combined with formalised trails and low-key picnic facilities (as existing).
- 13 Large concrete pads from historical use with potential for adaptive re-use. Consider former General Stores for overnight RV camping and Aircraft Stores for learn to ride or other youth orientated space to work in conjunction with playground area.
- 14 Former Motor Transport Building concrete pad. Used for unmarked car parking area with small toilet structure centrally located within concrete.
- 15 Previously well utilised Scout Hall currently closed due to contamination. Due to reopen following remediation works with ongoing Scout use.
- 16 Playground area in high quality natural foreshore setting with attractive tree cover, but basic play space and picnic style facilities.
- 17 Gravel foreshore parking area. Extension to RAAF period road, but intrusive on current connectivity of foreshore park.
- 18 Classic Boat Association building with strong membership and activity. Prominent foreshore location. User parking / access in adjoining open space. Secondary workshop in former Emergency Power House building.
- 19 Catalina Bay area with relatively shallow depth, easily accessible from the adjoining parkland to launch passive water craft.
- 20 Rathmines Theatre and Heritage Centre under current renovation to become a performance and heritage centre. Surrounds also to be improved with building works. Limited parking provided with overflow to Parade Ground proposed.
- 21 Foreshore park area with shared user path and occasional seating. Relatively easy access to Catalina Bay shoreline.
- 22 Well utilised Westlakes Music Centre (former Sergeant's Mess) with functional internal spaces but poor visual and physical relationship to surrounding open spaces and visual appearance (block walls) to street.
- 23 Safety concern of crossing on Stilling Street and acknowledgement of entry to the Rathmines Park area.

Precinct F - Town Park

- 24 Existing vegetation and land grade / retaining wall provides visual and physical separation of open space area to south and north.
- 25 Park area adjoining retail shops with some level of activity and use of basic tables / shelters and toilets.
- 26 Underutilised public open space with little infrastructure improvement, but occasional use for local events and gatherings.

**Rathmines Park
Plan of Management**



PARKLAND AREAS

- 1 Styles Point park area:** Improve access road and pathways with vehicle directional signage and barriers etc. Retain open space and undertake environmental improvements. Renew amenities building to provide improved appearance, showers and storage.
- 2 Shared path and disc golf:** Retain and improve semi-vegetated public open space. Remove disc golf hole along foreshore (reduced from 10 to 9 holes) and improve with shelters on foreshore adjoining boat ramp. Include interpretative signage on RAAF, Aboriginal and natural features.
- 3 F-Jetty park area:** Retain and improve extensive public open space area. Include retention of shared path, new shelters, and increased interpretative elements, potentially including substantial Aboriginal interpretation / artwork / play elements. Renew amenities building and improve car parking areas.
- 4 Catalina Point foreshore, jetty and swimming area:** Establish formal integrated pedestrian path in conjunction with revegetation and environmental improvements as a Landcare or similar initiative. Re-establish the former Bomb and Fuel Wharf as an accessible platform for fishing. Continue pathway to swimming area. Include seats, shade and other facilities to encourage use. Include access to Bowling Club for potential kiosk/café/food options or pop up food opportunities. Swimming baths to provide change/amenity facility, accessible water access and upgraded enclosure subject to broader LGA requirements.
- 5 Catalina Bay foreshore:** Undertake landscape protection works along water's edge, including provision of formal access points to reduce impact on foreshore ecology, but also retaining high levels of access for passive water craft.
- 6 Community park area:** Retain existing park area with basic improvements. To include new amenities, shelters and pathways to connect to existing shared path along foreshore.

BUSHLAND AREAS

- 7 Natural area zone:** Retain and improve natural vegetation area to north of Dorrington Road. Rationalise trails and create a loop to reconnect to the existing shared path. Include interpretation of RAAF, Aboriginal and natural elements and establish vegetation plans for Landcare works. Establish significant entry feature / interpretation elements at former Guard House location. Retain and improve area of Community Land to south of Dorrington Road.

FORMAL SPORTS AREAS

- 8 Sports precinct:** Retain existing sports fields with increased and formalised main parking area. Construct new grandstand seating and associated field and tennis area improvements as required. Provide new clubhouse / amenities building to meet extent of use and increasing female participation. Include formalised parking behind and on-street parking along Rosemary Row to benefit sports and retail precinct as required.
- 9 Bowling Club:** Develop long-term plans to assist in the reinstatement of the original Officer's Mess building, remove the detracting brick addition and create greater inside / outside connectivity - particularly to the north. Work with heritage architect and Bowling Club to identify appropriate changes and seek funding assistance for implementation. Consider options for kiosk style service area to north to cater for swimming area/new pathway users.

HERITAGE AREAS

- 10 Parade ground and hardstand:** Retain and improve Parade Ground and hard stand area as key large-scale events space. Rationalise outlets and ensure three-phase power / water and sewerage connections. Reduce use for overflow parking with introduction of permanent alternatives subject to demand. Establish more substantive RAAF use interpretive elements to help break up the expansive area and consider options to increase security / surveillance.
- 11 Catalina Point memorial:** Retain and enhance memorial according to Conservation Management Plan recommendations.

ACTIVITY HUB AREAS

- 12 Youth hub:** Youth hub expansion to include larger integrated facilities including substantially improved skate/pump track, multipurpose court. Opportunity for pop-up food vans and event stage. Formal and overflow parking provided on southern end. Includes new toilets to service youth hub and sportsgrounds.
- 13 Rathmines Theatre, Music Centre and open space:** Redevelop Rathmines Theatre in accordance with current plans, and surrounding public open space with increased picnic / shelter areas to south and north. Upgrade Music Centre and improve relationship to open space area to its north, including for outdoor performances.
- 14 Car parking:** Remove existing amenities and formalise car parking on old Motor Transport Building pad. Remove gravel parking area from prominent foreshore location and create greater visual connectivity around Scout Hall building and between Rathmines Theatre area foreshore and playground area. Consider interpretation options for Motor Transport Building e.g. footprint, signage.
- 15 Children's hub:** Improve playground and related facilities as an interactive play space celebrating the RAAF, Aboriginal and natural elements of the Park. Includes new amenities block in more accessible location, learn to ride track, gym equipment as well as improved picnic facilities. Include spaces for pop-up food vans or similar during events or for occasional use.
- 16 RV camping area:** Reinststate overnight camping on former General Stores area under Clause 77 of the Local Gov Regulations. Two-night maximum stay.
- 17 New off-street parking:** Staged parking, subject to demand assessment using permeable pavement to reduce visual impact.

LEGEND

- Extent of State Heritage Curtilage
- Plan of Management Area
- Existing Trees and Vegetation
- Proposed Trees
- Existing Buildings
- Proposed Buildings
- Other Proposed Structures
- Amenity Buildings
- Information Structures
- Entry Statements
- Bitumen Pavement
- Concrete Pavement
- Gravel Pavement

Rathmines Park
Plan of Management

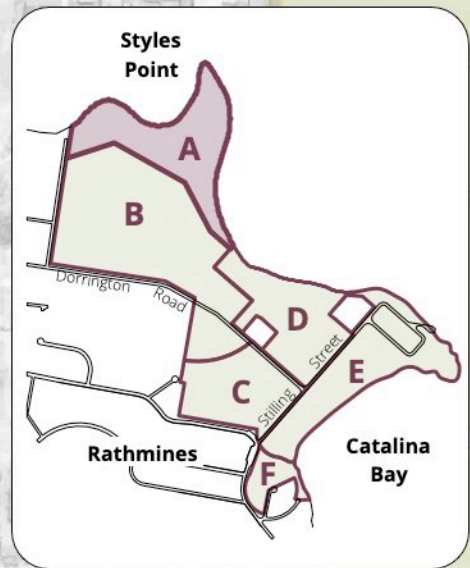


Sept 2020
Scale 1:5000@A3



ayling | drury landscape architecture

Master Plan - Full Site



LEGEND

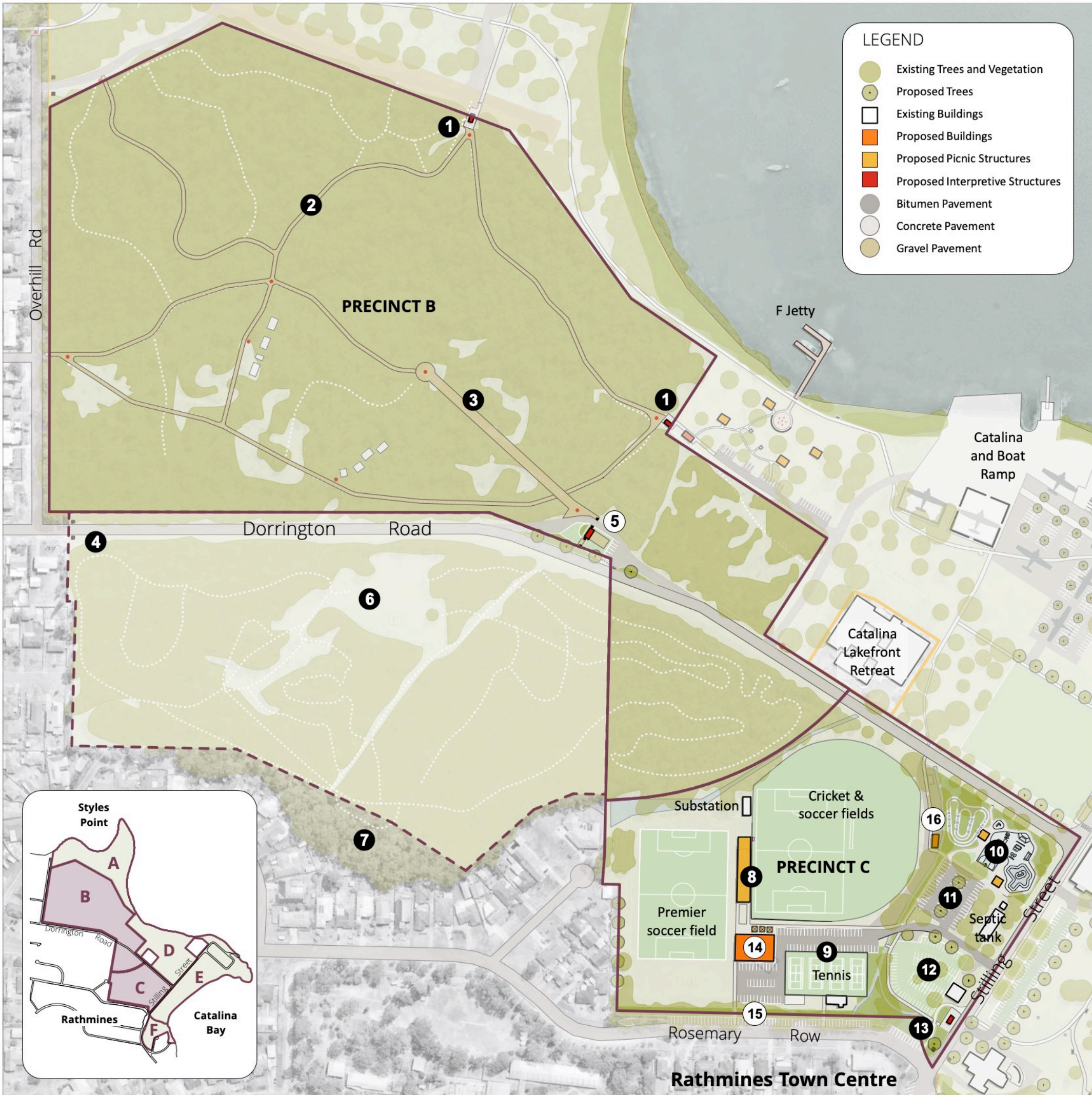
- Existing Trees and Vegetation
- Proposed Trees
- Existing Buildings
- Proposed Buildings
- Proposed Picnic Structures
- Proposed Interpretive Structures
- Bitumen Pavement
- Concrete Pavement
- Gravel Pavement

NOTES

Precinct A - Styles Point

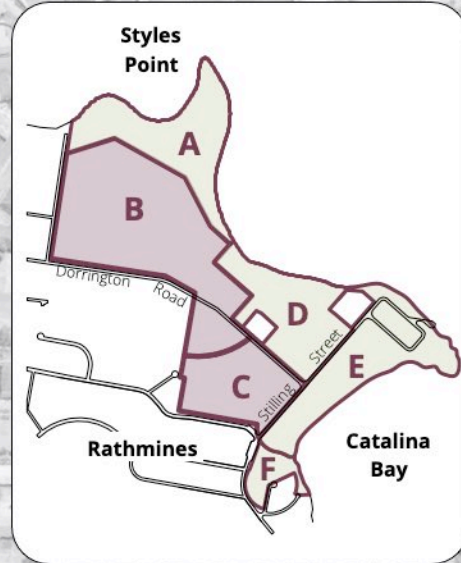
- 1 New Rathmines entry marker at Overhill Rd entry.
- 2 Future shared path extension around foreshore subject to further consideration by Council (outside of Plan of Management area).
- 3 Existing concrete shared path and associated furniture retained.
- 4 Existing disc golf course recreation activity maintained with the reduction of one hole (10 to 9 holes) in vicinity of boat ramp area to avoid conflict with picnic use.
- 5 Former landing strip reinterpreted around vehicle access with options for gravel footprint or perimeter bollards and associated vegetation management.
- 6 New interpretive structure and furniture at entry to established bushland area. Information includes directional maps, environment, RAAF and Aboriginal interpretive information.
- 7 New pedestrian path directly linking bushland area and existing path network.
- 8 Existing gravel access roads rationalised to a loop that maintains practical yacht club / trailer parking use and improves the natural headland amenity.
- 9 New picnic shelters and furniture on foreshore open space area following reduction in disc golf holes.
- 10 Existing boat ramp and jetty to be retained. New interpretive signage added to recognise RAAF infrastructure / uses.
- 11 Ongoing environmental management of foreshore and significant vegetation.
- 12 New access path between Styles Point and existing shared path. Bollards along edge of path to replace existing tubular fencing.
- 13 Existing amenities replaced or renewed to include modest yacht club storage, showers and accessible toilet facilities.
- 14 Improved access and picnic infrastructure on Styles Point headland.

Rathmines Park
Plan of Management



LEGEND

- Existing Trees and Vegetation
- Proposed Trees
- Existing Buildings
- Proposed Buildings
- Proposed Picnic Structures
- Proposed Interpretive Structures
- Bitumen Pavement
- Concrete Pavement
- Gravel Pavement



- NOTES**
- Precinct B - Bushland / Native Vegetation**
- 1 New interpretive structure and furniture at entry to established bushland area. Information includes directional maps, environment, RAAF heritage, and Aboriginal interpretive information.
 - 2 Key walking tracks within established bushland area upgraded and consolidated as defined loop walk with broader links. Includes interpretive signs at significant natural and heritage elements.
 - 3 Former spine road to sleeping quarters reinforced as main walking trail entry. Includes interpretive signage and furniture elements.
 - 4 New Rathmines entry marker at Overhill Rd intersection.
 - 5 Former Guard House reinforced as significant entry to Rathmines Park. Original alignment and building footprint defined with gravel pavement and planting. New structures includes re-interpreted gate pillars, defined parking, and an interpretive shelter style structure featuring directional maps and heritage information.
 - 6 Operational Land with Tourism zoning (outside Plan of Management).
 - 7 Area of Council owned bushland (Community land) outside of heritage curtilage and subject to Council's Generic Plan of Management.

- Precinct C - Sports & Youth Facilities**
- 8 Lighting, drainage, irrigation improvements to sports field as required over time. New covered grandstand as per current grant process also included.
 - 9 Internal parking sealed and linemarked. Tennis areas to be retained.
 - 10 New youth hub with facilities such as new skate park, pump / BMX track, basketball, parkour, picnic shelters, furniture and bubbler.
 - 11 New car park replacing existing skate bowl. Approx 60 spaces shown.
 - 12 Overflow parking area with new perimeter shared path linking town centre to sporting precinct and skate park area.
 - 13 New information structure and furniture at Stilling St park entry.
 - 14 New sports club building designed for multi-use (e.g. soccer, cricket and potentially tennis in the longer-term) and in accordance with comparable facilities and league requirements. Subject to LGA wide sports facility review and priorities.
 - 15 New on street parking at Rosemary Row. Includes more inclusive pedestrian access to tennis, sports fields and town centre.
 - 16 New amenities building to replace existing. Located to align with new pedestrian crossing over open stormwater channel to service both the youth hub and sports grounds. Surrounding informal parking areas retained.

Rathmines Park Plan of Management



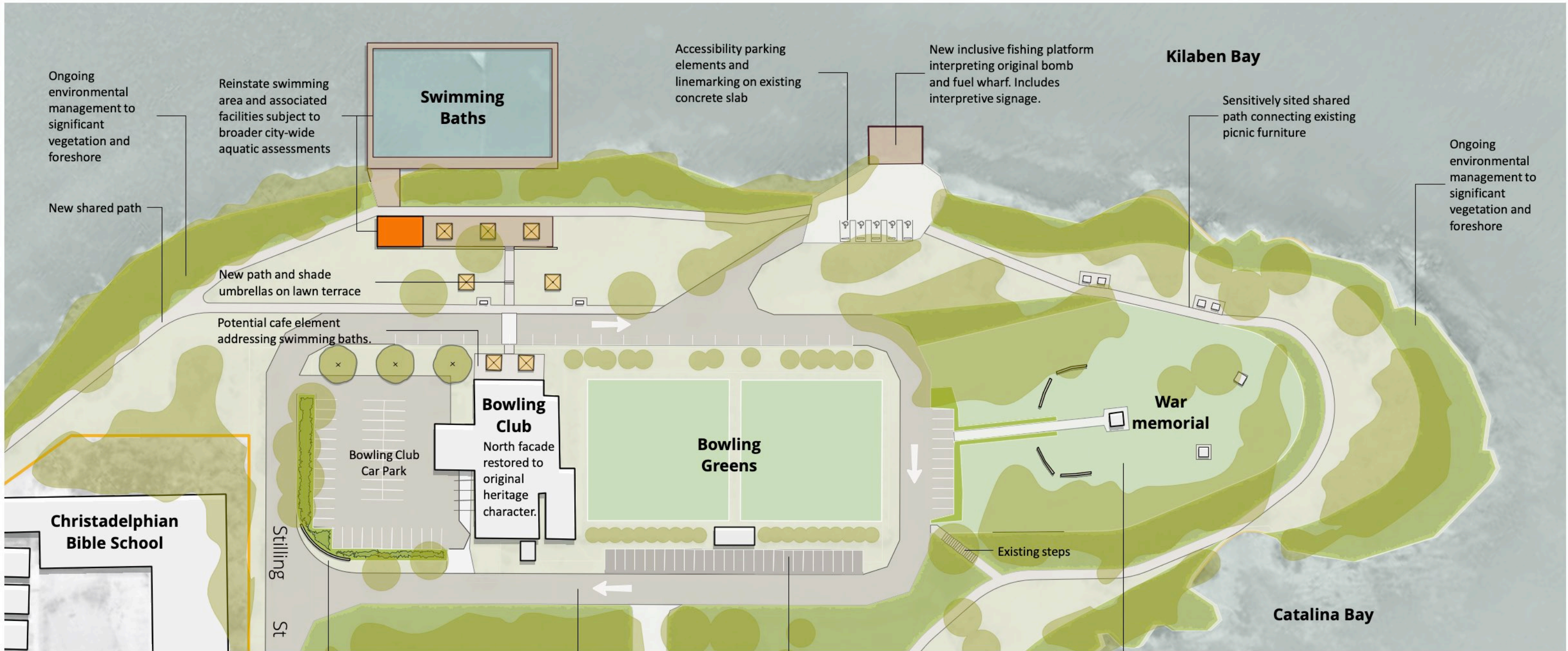
Precinct E - Catalina Bay / Memorial Point

- Reinstatement of swimming area and associated facilities subject to broader city-wide aquatic assessment.
- Former Bomb and Fuel Wharf reconstructed to provide dedicated access friendly fishing platform. Note potential for contamination due to previous use. Connected with new loop path around Catalina Point.
- Bowling Club facilities on long-term lease from Council. Remove unsympathetic northern facade to original heritage building (Officer's Mess). Potential for cafe element addressing swimming baths. Change loop road to one-way only. Refer CMP for details.
- Continue any upgrade of War memorial area strictly in accordance with heritage values. Refer to CMP for details.
- New loop path around Catalina Point connecting existing picnic facilities. Increased environmental restoration to significant foreshore vegetation.
- Adaptive re-use of former General Stores concrete pad for overnight RV camping. Includes interpretive line marking of original building footprint.
- Former Motor Transport Building concrete pad. Existing toilet structure removed and replaced with new facility in northeast corner to include interpretive signage shelter. Concrete pad linemarked for parking with interpretation of original building footprint. Renew concrete to make level where required.
- Scout Hall reopened following remediation works.
- High quality natural foreshore setting retained for picnic gatherings with some improvements including additional shelters and paths.
- Playground extended and upgraded. Includes learn to ride track on Aircraft Stores concrete pad, new climbing net, nature play and enhanced RAAF interpretive elements.
- Existing foreshore parking area reduced to RAAF period road to improve foreshore connectivity. Potential to include outdoor fitness station if not dispersed along shared user pathway.
- Classic Boat Association building and activity to be retained. New parking to west to mirror parking on southern edge of loop road. Water and building access for vehicles to be defined further in future detail works.
- Rathmines Theatre and Heritage Centre and Community Hall renovated in accordance with current plans. Surrounds to foreshore redefined as an integrated outdoor event space flanked by Classic Boat Association building and new large shelter.
- New off street parking to be staged using permeable to reduce visual impact. Adjoining foreshore park area retained for multipurpose use.
- Review internal building layout for Westlakes Music Centre to meet user needs. New northeastern outdoor performance space and landscaping to improve street appearance.
- Entry markers and landscape to Stilling St entry
- New shared pathway connecting town park to Catalina Bay foreshore.

Precinct F - Town Park

- New facilities adjoining town centre including new amenities building, shelters, furniture, signage and landscaping.
- Perimeter loop path reinforcing original circular land boundary and connection to Rathmines, Town Centre and Rathmines Park.

Rathmines Park Plan of Management



DETAIL PLAN - Catalina Point Area



Upgraded swimming baths



Outdoor umbrellas on grass terrace



Former bomb and fuel wharf



War memorial area



Catalina Point



New shared path

CHARACTER IMAGES

Rathmines Park Plan of Management

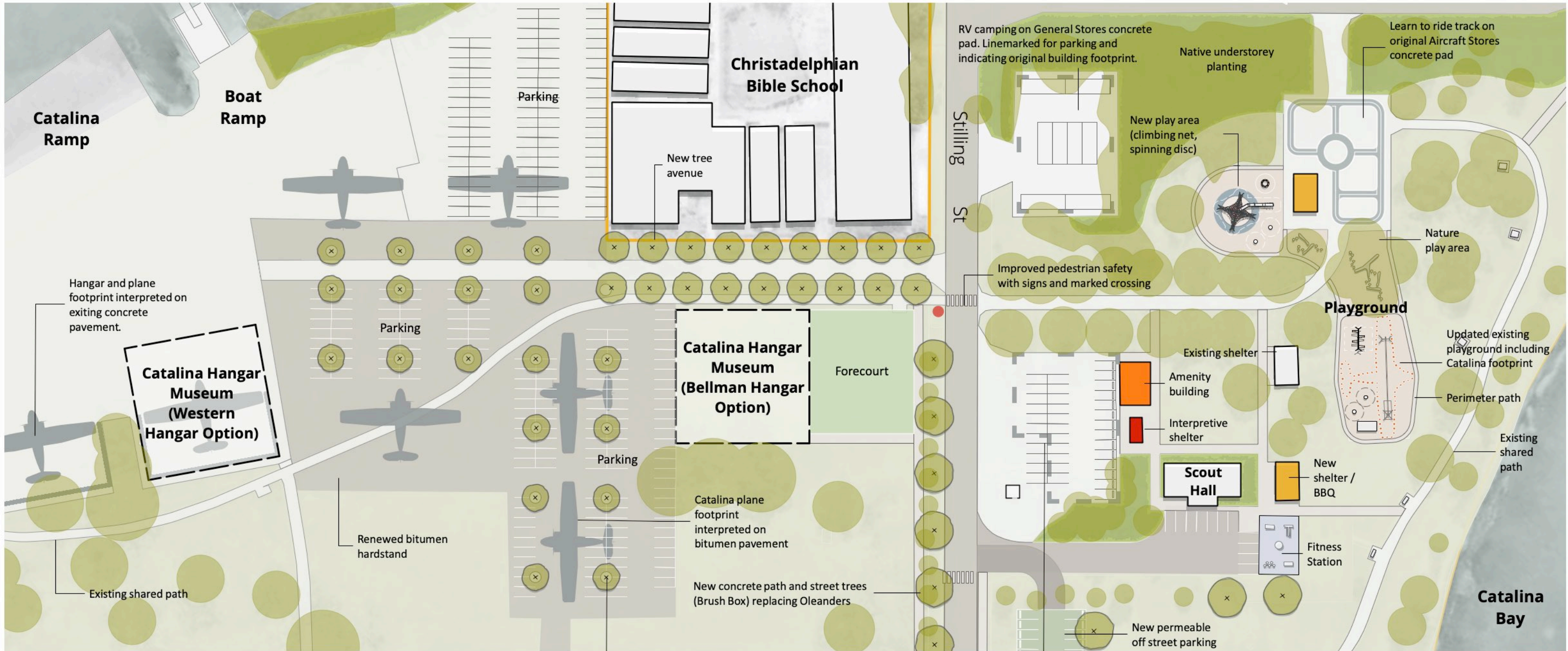


May 2020
Scale 1:1000@A3



ayling drury landscape architecture

Master Plan - Detail Plan 1



DETAIL PLAN - Boat Ramp and Playground / Picnic Area



Catalina Hangar Museum



Interpretive Catalina pavement footprints



Nature Play



Learn to ride



Outdoor fitness station



RV Camping

CHARACTER IMAGES

Rathmines Park
Plan of Management

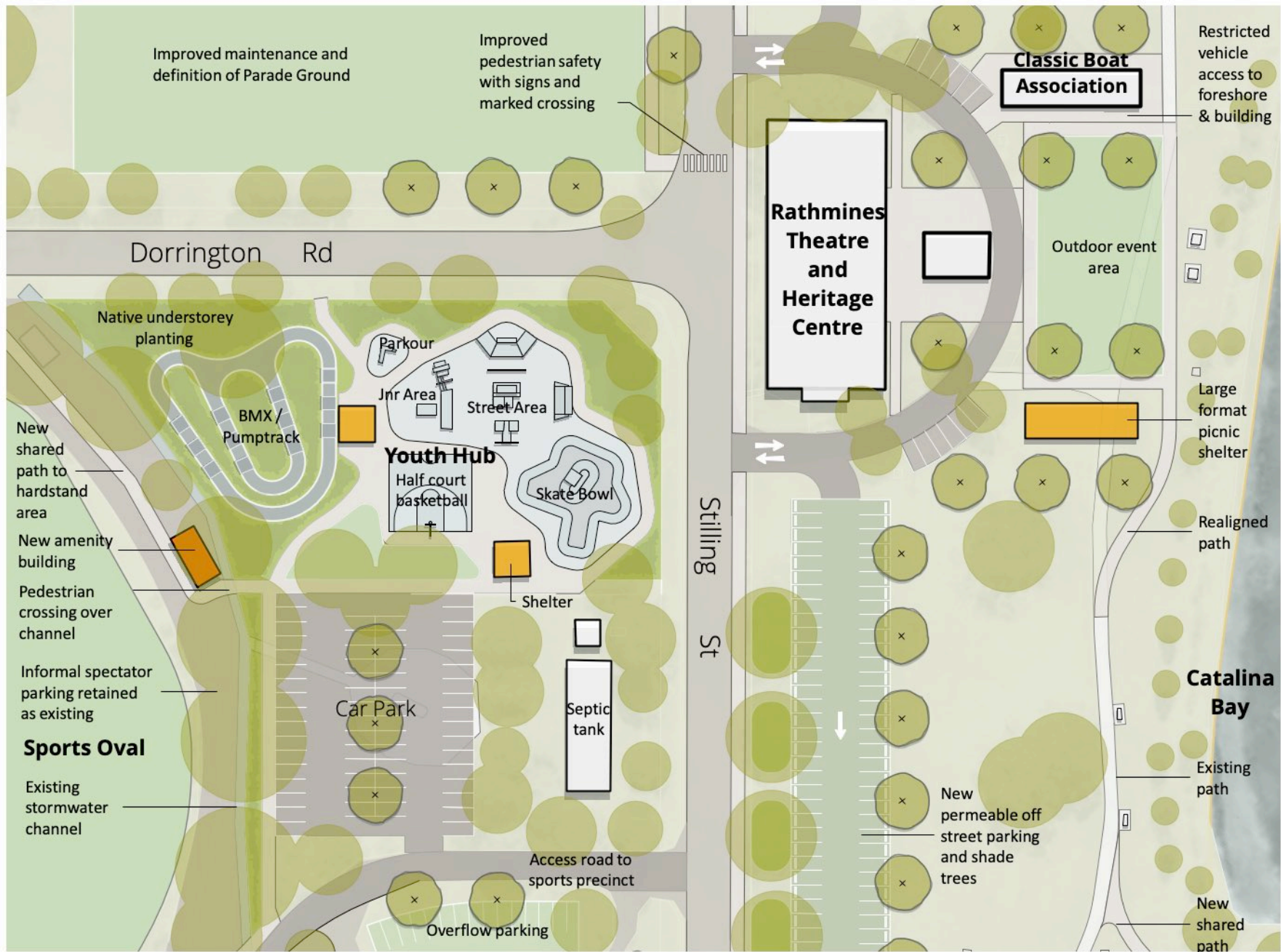


May 2020
Scale 1:1000@A3



ayling | drury landscape architecture

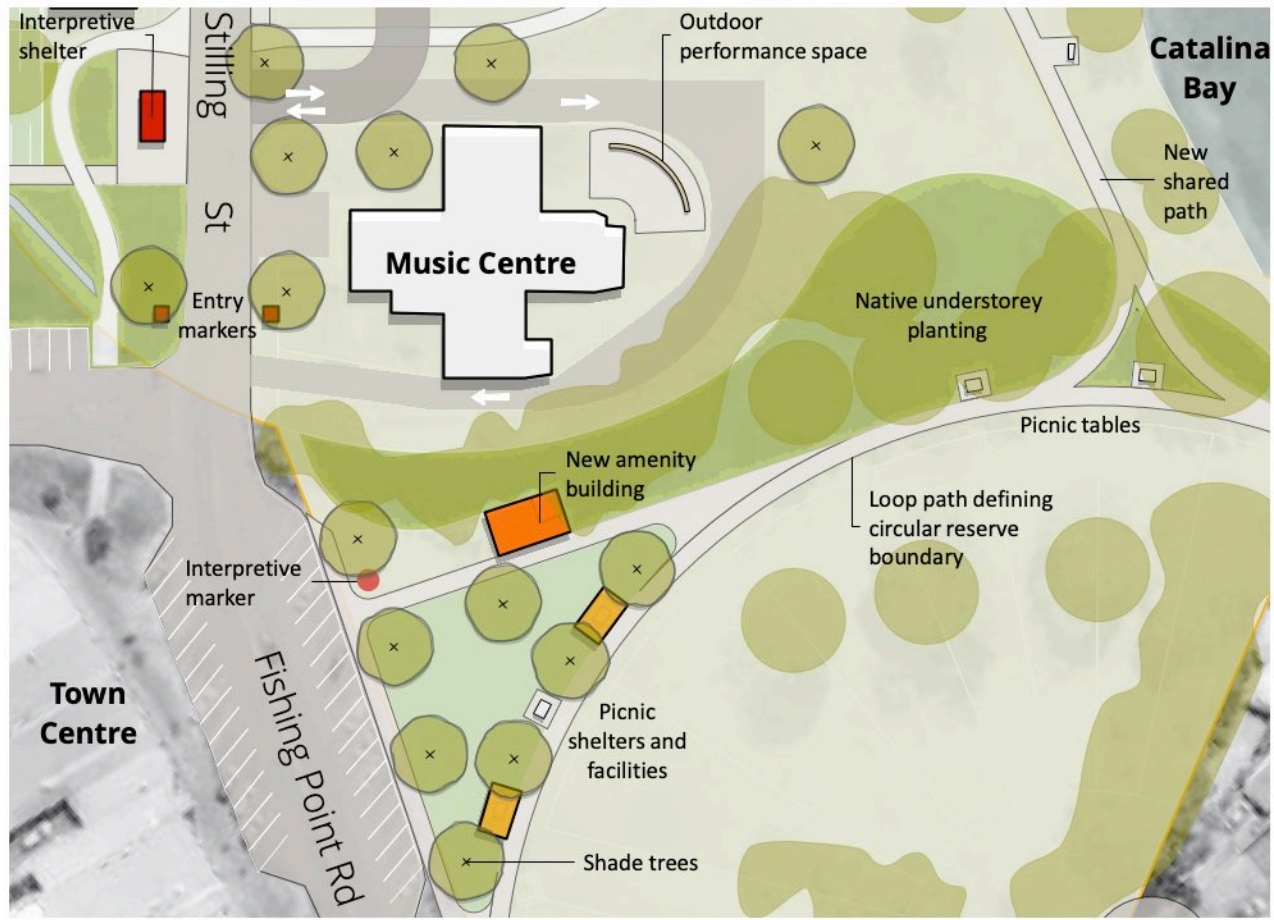
Master Plan - Detail Plan 2



DETAIL PLAN - Youth Hub and Rathmines Theatre Area



DETAIL PLAN - Sport Clubhouse



DETAIL PLAN - Westlake Music Centre and Town Centre Park



New Sports Clubhouse



New Grandstand



Skate Park



BMX / Pump Track



Permeable off street parking



Interpretive Marker

CHARACTER IMAGES

Rathmines Park Plan of Management

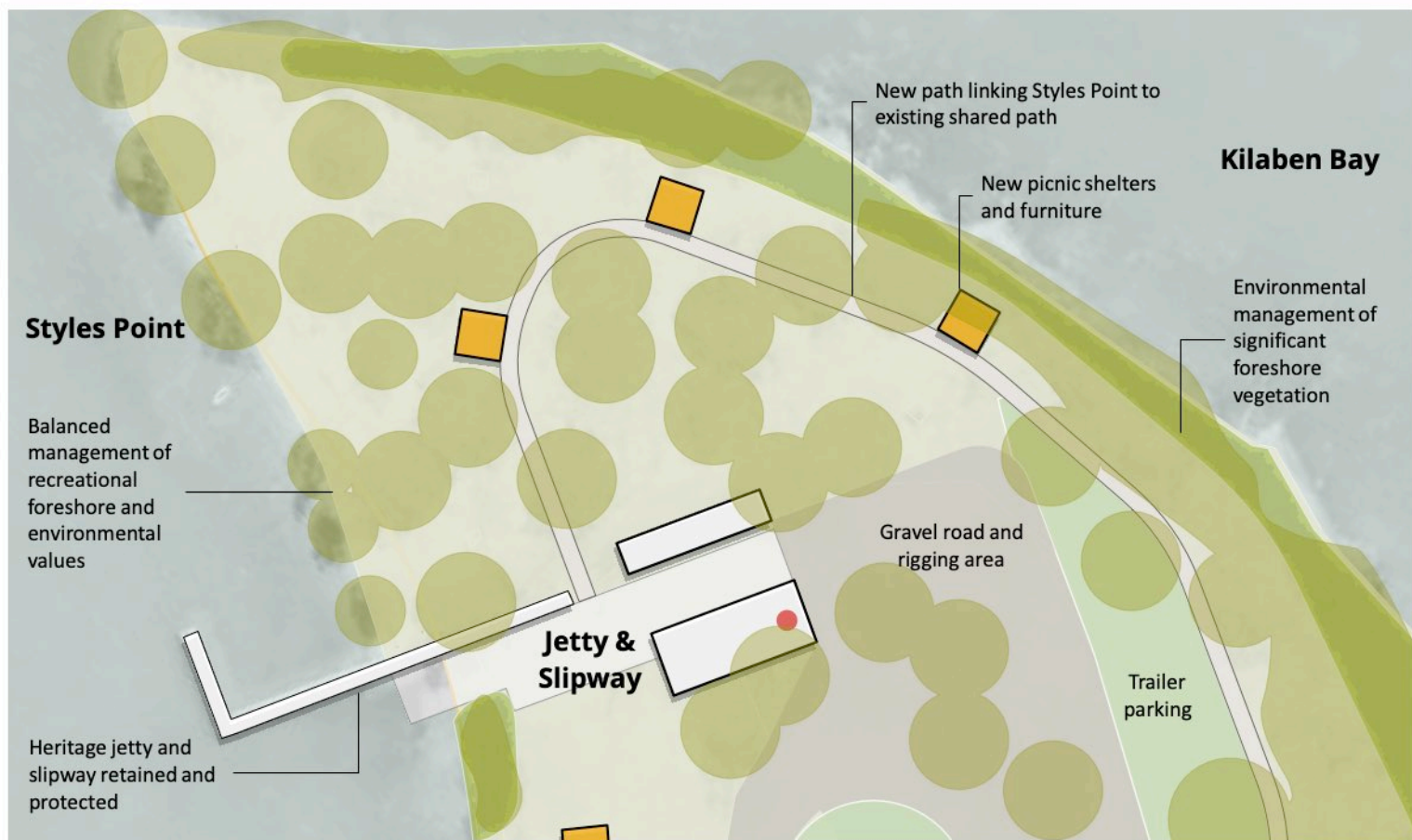


May 2020
Scale 1:1000@A3

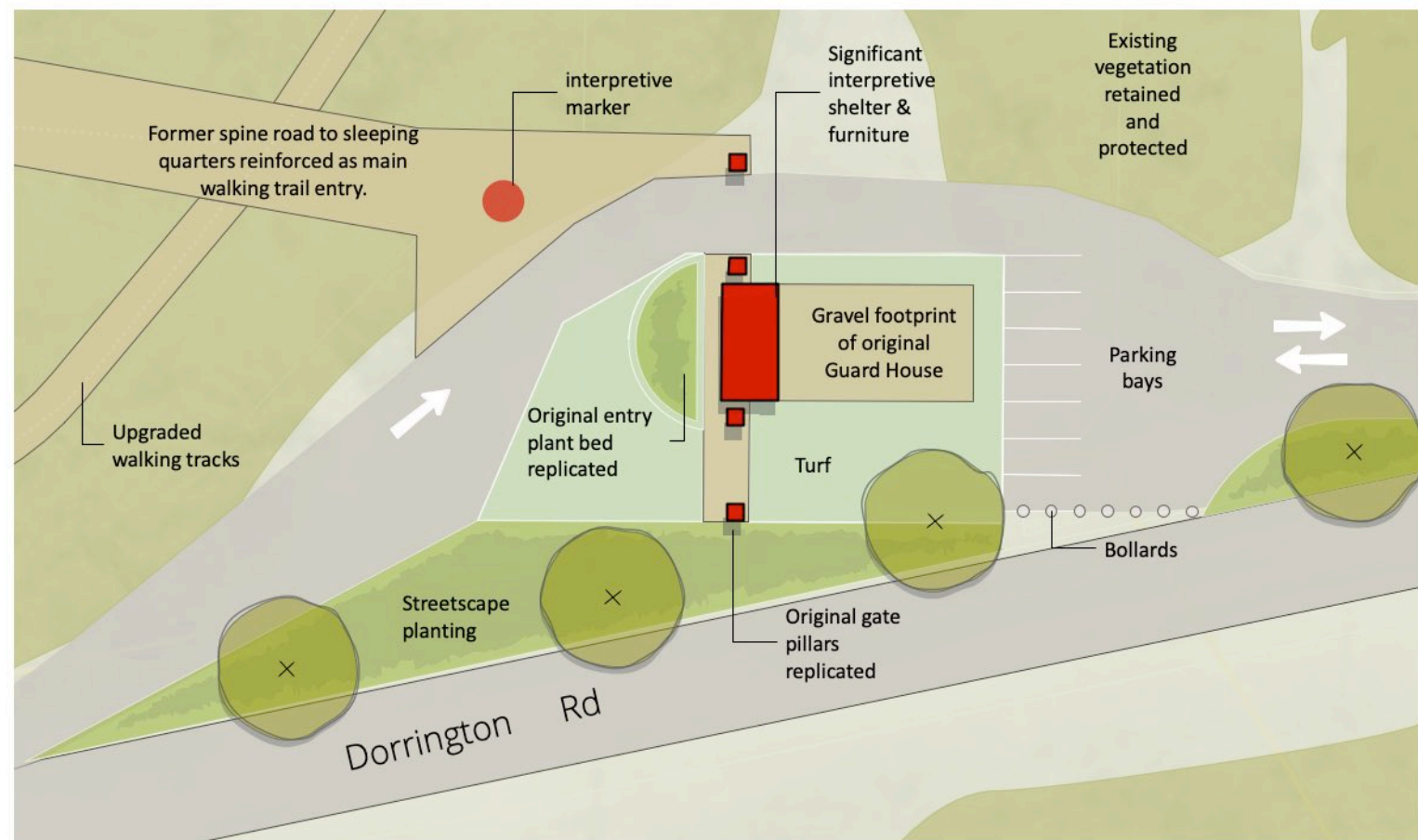


ayling drury landscape architecture

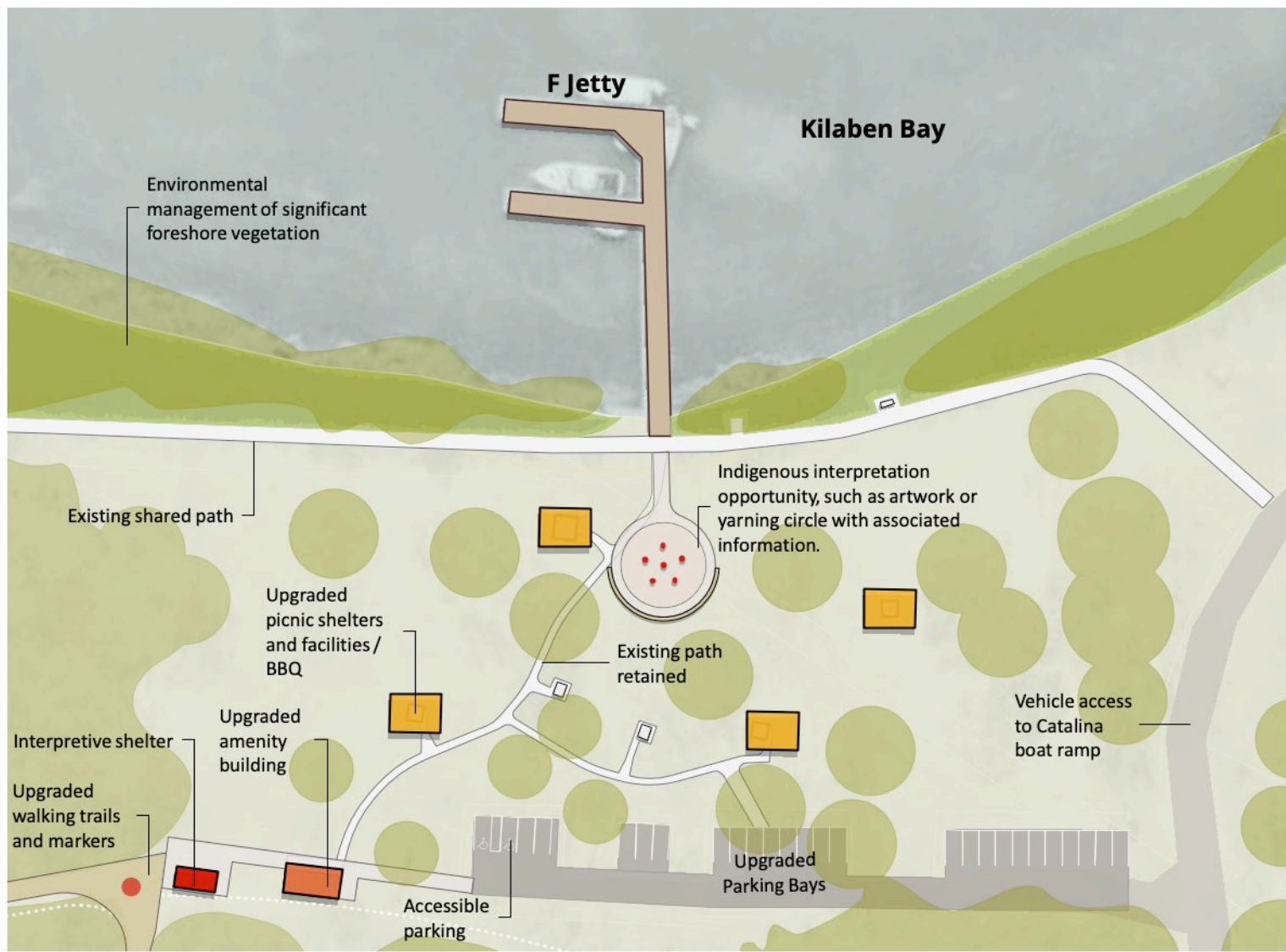
Master Plan - Detail Plan 3



DETAIL PLAN - Styles Point Area



DETAIL PLAN - Guard House Area



DETAIL PLAN - F Jetty Picnic Area



Picnic Shelter



Original Guard House



Interpretive Shelter



Walking Trail



Interpretive Marker



Environmental Management

CHARACTER IMAGES

Rathmines Park Plan of Management



May 2020
Scale 1:1000@A3



ayling drury landscape architecture

Master Plan - Detail Plan 4