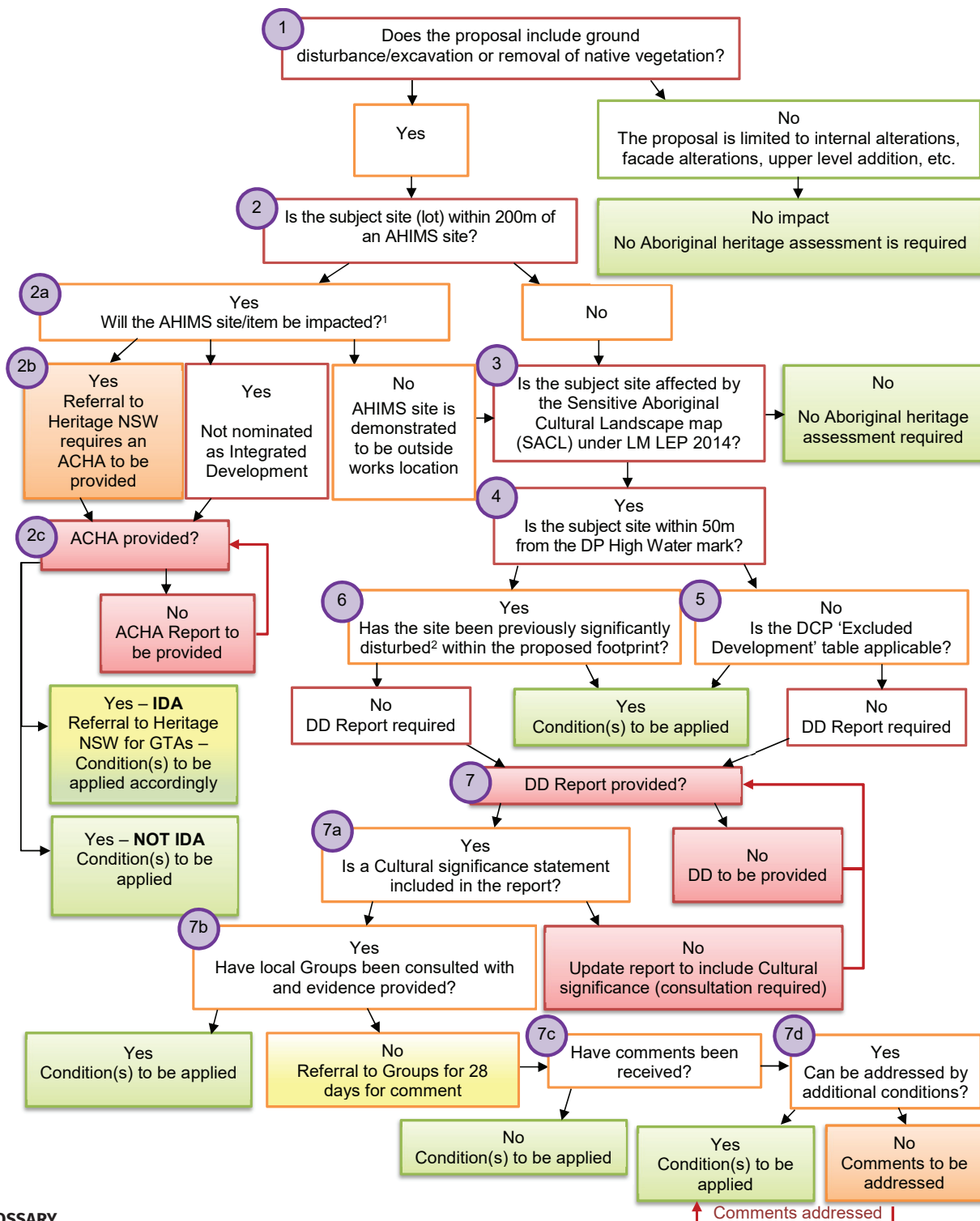


ABORIGINAL CULTURAL HERITAGE ASSESSMENT PROCESS FLOWCHART

This flowchart provides a summary of key elements of the Aboriginal Cultural Heritage assessment process. Any person using this document must do so on the basis that, not every scenario and issue can be addressed, and discussion with Council should be undertaken. This document is subject to change without notice.



GLOSSARY

ACHA – Aboriginal Cultural Heritage Assessment Report
AHIMS - Aboriginal Heritage Information Management System
DCP Excluded Development Criteria table – Refer to the Development Control Plan, Part 2 to 9, 2.15 or 2.16 – Aboriginal Heritage, Table 4 or 5
DD – Due Diligence Report
DP High Water Mark - The position of the high-water mark as shown on the deposited plan.
GTAs – General Terms of Approval
LM LEP 2014 – Lake Macquarie Local Environmental Plan 2014
IDA – Integrated Development Application (National Parks Act)

NOTES

¹When no impact to AHIMS site is stated, it needs to be substantiated. An Extensive Search of the AHIMS can be undertaken to obtain additional information, such as coordinates and type of sites.

²Substantially disturbed refers to earthworks which required removal of top-soil, slab-on-ground construction, terracing/retaining, etc. E.g. Buildings on piers do not constitute the same level of disturbance as new slab-on-ground construction. Previous disturbance should be substantiated.