



Lake Macquarie
City Council



LAKE MACQUARIE
CITY VISION
AND COMMUNITY VALUES

NOVEMBER 2016



Acknowledgements

Traditional Custodians

Lake Macquarie City Council acknowledges the traditional custodians of the land over which this document was prepared, the Awabakal People. We pay respect to knowledge holders and community members of the land and acknowledge and pay respect to Elders past, present and future.

Lake Macquarie Community Reference Group

Council places great importance on working with our community and established a group of Lake Macquarie residents who have created the new City Vision and Community Values, as presented herein.

The Lake Macquarie Community Reference Group comprised 20 residents of the City who reflected the broader Lake Macquarie population in terms of age, gender and geographic distribution who were mostly drawn from people who attended a community Future Forum held during September 2016. The group met five times during October and November 2016 and identified that the vision and values should have the following characteristics: Unique (to Lake Macquarie), Clear, Achievable, Seriously Ambitious, Adaptable and Inclusive.

Lake Macquarie City Council acknowledges and thanks the members of this group for their time and effort to work through and summarise the feedback from the broader community to create the City Vision and Community Values. The members of the group were:

Damon Baker	Dave Lemcke
Stacey Brodbeck	Barry Luttrell
Neville Clouten	Tina McKenzie
Megan Cook	Matthew McMullen
Deb Dugan	Gavin Ord
Thanh Ha	Narelle Redman
Elyse Hudson	Beverley Rees
Sian Hunter	Carolyn Schofield
Adrian Krempin	Susi Stewart
Peter Lee	Vince Sunter

City Vision

Lake Macquarie is a city with **a lake at its heart** encircled by **distinctive towns** and villages. We balance our **cherished environments** with our need for **great spaces to live** and visit, **smart transport** options and a **thriving economy**; which adapt and **strive to be fair for all.**

cherished environment





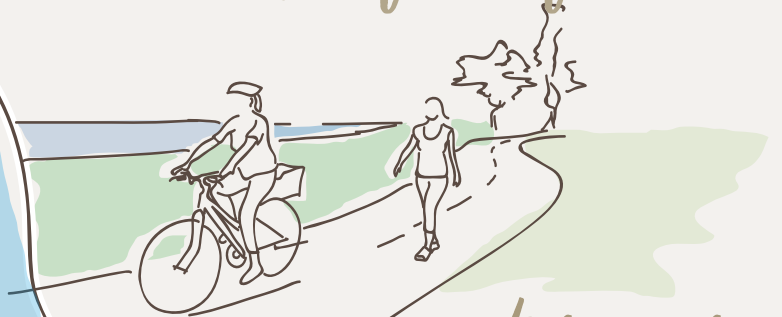
a thriving economy

*distinctive towns
and villages*

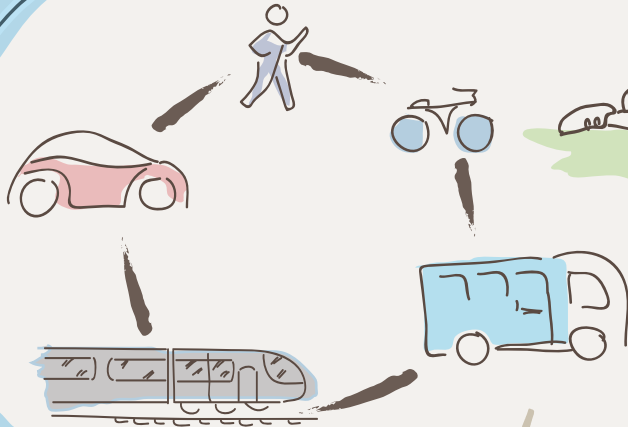


strive to be fair for all

*lake at
its heart*



*great spaces
to live and visit*



*smart
transport options*

Community Values

We value our *unique landscape*



a place where the natural environment (bushland, coast, lake and mountains) is protected and enhanced; where our existing urban centres are the focus of our growth, maintaining their unique characteristics.

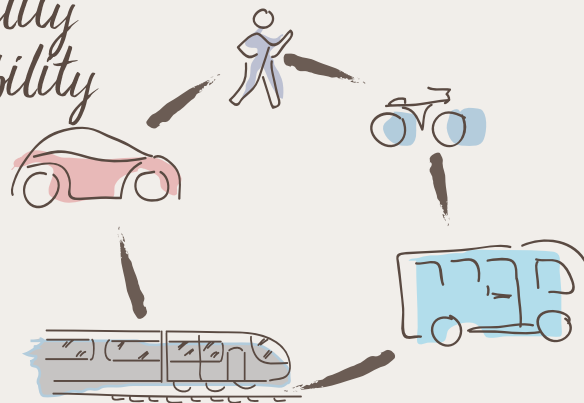
We value *lifestyle and wellbeing*

a place that encourages safe, active and social opportunities.



We value *mobility and accessibility*

effective transport systems that provide choices to conveniently move people, goods and services.



Examples of what this could look like:

- Reducing our impact on the environment (carbon footprint, recycling, pollution, etc)
- Focussing development in distinct locations.
- Restoration of degraded environments.

Examples of what this could look like:

- Recreational opportunities and connected local places for a range of safe activities.
- Multipurpose local facilities (shops, parks, schools, etc) connected by shared pathways.
- A wide range of adaptable and inclusive community services.

Examples of what this could look like:

- Connected active transport network, integrated with public transport.
- Convenient access for locals and visitors alike to our major commercial and recreational centres.

We value a *diverse economy*

which is resilient and adaptable to change, making the best use of the unique advantages of our location and lifestyle.



Examples of what this could look like:

- Promote and develop tourism and visitors.
- Attract businesses complementary to existing enterprises.
- Businesses understand our comparative advantage.

We value *connected communities*

that support and care for all and provide a sense of belonging.

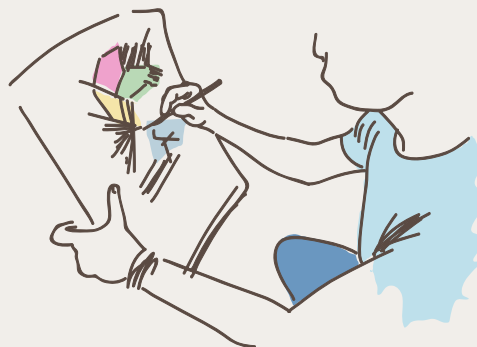


Examples of what this could look like:

- Support and encourage community and sporting groups.
- Acknowledge and celebrate our diverse cultures including traditional owners and all newcomers.
- A community that is resilient in the face of disasters.

We value *creativity*

working together with creative process and outcomes that bring together history, culture, knowledge and expertise that supports new technologies and ways of thinking.



Examples of what this could look like:

- Arts represented throughout Lake Mac.
- People with expertise and resources contribute their creative ideas and thinking processes.
- New technologies and innovations that support new opportunities that are mutually beneficial.


We value *shared decision-making*

Lake Macquarie communities continue shared responsibility for governance.



Examples of what this could look like:

- Proactive community groups working collaboratively with Council to deliver positive environmental, sustainable economic and social outcomes.
- Equitable distribution of resources and opportunity.
- Transparent and informed decision-making.

A photograph of two young children riding a bicycle. The child on the left is wearing a red helmet and a grey sweater. The child on the right is wearing a blue helmet and a light-colored patterned vest over a white sweater. They are outdoors with trees in the background. A semi-transparent dark box is overlaid on the bottom left of the image, containing text and icons.

Lake Macquarie City Vision and Community Values

November 2016

Lake Macquarie City Council

- 📍 126-138 Main Road, Speers Point NSW 2284
- ✉ Box 1906 Hunter Region Mail Centre NSW 2310
(02) 4921 0333 Fax: (02) 4921 0351
- @ council@lakemac.nsw.gov.au
- 🌐 lakemac.com.au
- 📘 facebook.com/lakemaccity
- 🐦 twitter.com/lakemac

Designed by Raelene Narraway, Graphic Designer
Printed November 2016 on recycled paper
by Lakemac Print (02) 4921 0510

© Lake Macquarie City Council

